

Twickenham & Richmond TRIBUNE

Contents

- TickerTape
- COVID-19
- Brr
- WIZ Tales: Chinese New Year
- Business Improvement Districts – in Our Borough
- Twickenham Riverside
- Letters
- Twickers Foodie
- Traveller's Tales
- Welcome! The Year of the RABBIT
- Still keeping your New Year resolutions?
- Review
- Hampton Rangers Club House

Contributors

- Simon Fowler
- Kew Gardens
- Alison Jee
- Doug Goodman
- Mark Aspen
- Deep Patel
- Bruce Lyons
- World InfoZone
- Teddington Theatre Club
- St Mary's University
- Brentford FC
- Hampton & Richmond Borough FC
- RFU
- GB News
- Royal College of Emergency Medicine
- LBRuT

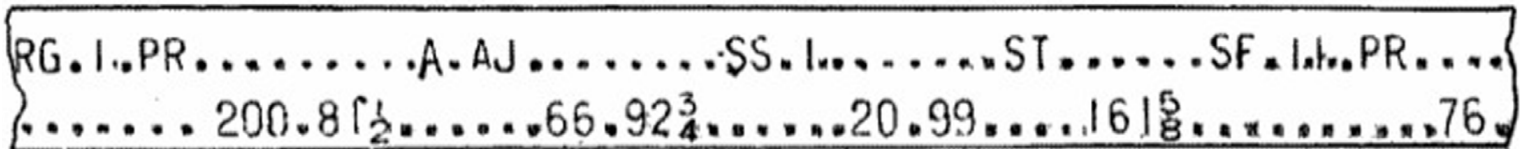
Editors

Berkley Driscoll
Teresa Read



20th January 2023

T&RT



TickerTape - News in Brief

Strawberry Hill House re-opens

Date for your diary, Strawberry Hill House re-opens Sunday 29th January. Don't miss over 50 Old Master paintings on long-term loan from Dulwich Gallery, which will help recreate the House's atmosphere as it would have appeared over 250 years ago

Bus Strikes

There are bus strikes on these dates: Wednesday 25 and Thursday 26 January.

Routes affected are listed [HERE](#). Other services not affected by strikes will be busier than normal.

South Western Railway

The lines in the Hounslow area will be closed all weekend for maintenance work.

Saturday 21st January

- London Waterloo to Weybridge via Staines services will be revised. These services will be diverted between Barnes and Feltham and will call additionally at Richmond and Twickenham.
- Buses will run between Barnes and Feltham via Hounslow.

Sunday 22nd January

- London Waterloo to Woking via Staines services will be revised. These services will be diverted between Barnes and Feltham and will call additionally at Richmond and Twickenham.
- Buses will run between Barnes and Feltham via Hounslow.
- The afternoon and evening London Waterloo to Kingston via Hounslow services will not run.
- Buses will run between Barnes and Twickenham via Hounslow (afternoon and evening only).



skyelectrical

Replacing your halogen recessed lights with LEDs will:

- ✓ SAVE ENERGY
- ✓ SAVE YOU MONEY
- ✓ PROVIDE BETTER LIGHTING

So...

- ✓ CALL US TODAY FOR A FREE HOME ASSESSMENT AND QUOTE

For a timed appointment please call Sky Electrical on 020 8894 1799
22 Fifth Cross Road, Twickenham, Middlesex, TW2 5LF
www.skyelectrical.co.uk

020 8894 1799
info@skyelectrical.co.uk

COVID IN THE NEWS

Teresa Read

Davos 23 World Economic Forum: The world needs a COP-like process for pandemic preparedness

The Lancet: COVID-19 pandemic in 2023 far from over: Rather than hoping for the end, letting our guard down, and thinking that the problem is somewhere else, everyone needs to remain alert.

Project Syndicate: Breathing Life Back Into COVID Prevention “Taking the fight to pathogens like the coronavirus will require a multi-pronged strategy to improve air quality in indoor public and private spaces.”

Fox News: DOJ defending mask mandate on planes months after Biden said pandemic is ‘over’. Biden’s DOJ is fighting to keep a mask mandate in place at the 11th Circuit Court of Appeals

The National - UAE: Thailand reintroduces Covid-19 travel restrictions for all international tourists

NBC NEWS: Concerns of a surge in Covid-19 cases in rural parts of China are growing as people prepare to travel for the Lunar New Year holiday

Fox News: Doctors in China discouraged from citing COVID as a reason for patients dying amid outbreak

The Independent: Do we have China’s full Covid data? The WHO is pushing for more: “The lack of transparency around the latest outbreak has heightened concern among global health officials that new variants could be spreading undetected”

Evening Standard: Orthrus Covid variant behind quarter of UK cases “a sub-lineage of the Omicron variant known as Orthrus or CH.1.1”

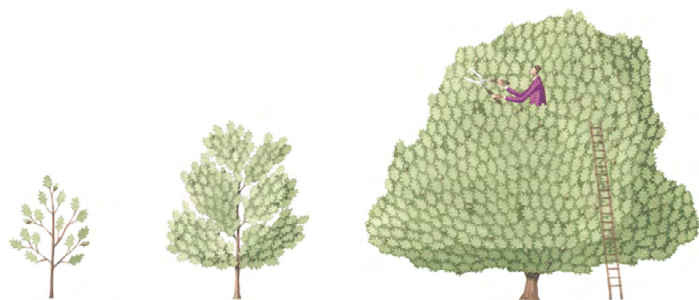
World Health Organization, COVID-19 Weekly Epidemiological Update

European Region

The European Region reported over 311,000 new cases, a 35% decrease as compared to the previous week. Six (10%) of the 61 countries for which data are available reported increases in new cases of 20% or greater, with the highest proportional increases observed in Spain (17,773 vs 9,220 new cases; +93%), Albania (157 vs 113 new cases; +39%), and Montenegro (447 vs 329 new cases; +36%).

The highest numbers of new cases were reported from Germany (83,605 new cases; 100.5 new cases per 100,000; -36%), Italy (62,599 new cases; 105 new cases per 100,000; -42%), and France (39,757 new cases; 61.1 new cases per 100 000; -52%).

The number of new weekly deaths in the region decreased by 40% as compared to the previous week, with 2,826 new deaths reported. The highest numbers of new deaths were reported from France (520 new deaths; <1 new death per 100,000; -35%), Italy (461 new deaths; <1 new death per 100,000; -25%), and Spain (346 new deaths; <1 new death per 100,000; +9%).



The Tree Agency

darryl parkin

The Treehouse
25 King Edwards Grove
Teddington, Middlesex TW11 9LY
Telephone 020 8274 0107
Mobile 07960 123580
Fax 020 8274 0119
info@thetreeagency.co.uk
www.thetreeagency.co.uk



The Tree Agency

Brr

By Simon Fowler

We're in a midst of a short cold snap, but it is nothing like what local people experienced 130 years ago.

December 1890 was the coldest for 150 years. At the beginning of December 1890, the *Richmond and Twickenham Times* merely stated that it was especially cold, but during the month it must have got colder for the edition of December 27th painted a very bleak picture:

'The River Thames at Twickenham presented a remarkable appearance on Tuesday morning. The whole width of the river, from Eel Pie Island to Pope's Grotto, at Cross Deep, was frozen over, and in some places the ice was fully a couple of inches in

thickness. Large blocks of ice which had floated down the stream from Teddington Weir and other places beyond, rapidly accumulated throughout Tuesday evening and Wednesday morning, until the river-for close on a mile was completely frozen over. Several persons ventured upon the ice, but its dangerous condition compelled them to return speedily to terra firma.

On Wednesday afternoon a large quantity of ice found its way to the backwater, partially through the thaw but mainly by the action of the tide, and by Thursday morning it had almost entirely disappeared. The river had not been completely frozen over for thirty years previously, though the backwater was thinly covered with ice about nine years ago, when, it will be remembered, a cricket match was played, a sheep was also roasted on the frozen surface.

Seldom was there a time when more real distress existed. The persistent frost and cold have thrown hundreds of men out of employment. Soup and bread kitchens were being set up in Twickenham at the 'nominal price of two pence' for a meal.

Great masses of ice and frozen snow could be seen floating down the river and a steam tug was sent out to break up the ice and keep the river open. One correspondent reported seeing a huge block of ice, nearly eight feet high, stranded in front of Barnes Terrace. At Gothic Lodge in Staines Road, Twickenham, the lake there was frozen to a depth of about eight inches. A charge of sixpence was made to the public for skating and it was reported that there had been a large daily attendance. It was proposed to illuminate the lake every evening and a carnival was contemplated.

By the middle of January, the visit of "General Thaw" was welcomed as a great boon to the poor fishermen, but within two days "General Frost" returned. However, fishermen and anglers hoped that within the week they would be able to return to work and pleasure, because the Thames had not suffered, like some rivers, by the destruction of fish frozen to death in the ice.'



Winter sports on the Thames at Richmond, 1855
Credit: Orleans House Gallery (LDORL: 02428)

WIZ Tales - THE CHINESE NEW YEAR

Teresa Read

This family festival involves the same ideas of change and renewal as its equivalents around the world.

“Kung hei fat choi” is the Chinese New Year greeting.

THE YEAR OF THE RABBIT

The most important celebration in China and Hong Kong is the Chinese New Year, the beginning of the lunar calendar is based on the cycle of the moon. The years are named after the signs of the twelve signs of the Chinese zodiac.



Year of the Rabbit



Lion



Dragon

The following emails about Chinese festivals are from schools in China.

The Twelve Signs in the Chinese Zodiac - *Ni hao from CHINA: Emails from teachers in China*

“Do you know the *Twelve Animal Signs* in China? Or we can call it the Chinese Zodiac. You might know that many Chinese people strongly believe that the time of a person’s birth is the primary factor in determining that person’s characteristics. It is essential in China that every person knows which animal sign he is born under and most of Chinese truly believe in the signs.

Legend says Buddha invited all the animals to his kingdom, but only 12 came: rat was the first, then ox, tiger, rabbit, dragon, snake, horse, sheep, monkey, rooster, dog and pig. Buddha named the year after the animals in the order of arrival.”

The Chinese New Year (The Spring Festival) *from a teacher in China*

“The Spring Festival, also known as the Lunar New Year, is the greatest traditional festival. It is usually a time between late January or early February, which means rest and relaxation between winter and spring after a year’s toil and means celebration as well. Before the Spring Festival, people clean their houses, put red couplets on their gates, and set off firecrackers (according to fairy tale for driving a demon named Nian away). On the eve of the Spring Festival, a get-together banquet is a must, and the most popular food is Jiaozi, which is supposed to bring good fortune. On the first day of the New year, everybody wears new clothes and greets relatives and friends with bows and congratulations wishing each other the best during the New Year.”

Ni hao from CHINA: *from pupils in China*

“We want to tell you something about the special snacks of our festivals. The most famous one is jiaozi. The history of jiaozi can be counted back to ancient times. During the Spring Festival making jiaozi has become the custom almost for all the Chinese, it started in the Ming Dynasty, about 500 to 600 years ago. The reason was quite simple. The shape of jiaozi looks like the gold or silver ingot used as money in ancient China. As the Spring Festival marks the beginning of a new year, people like to eat jiaozi to bless themselves for good fortune in the new year. Although time has changed, the tradition has remained still. The fun of eating jiaozi lies not only in the delicacy itself but also in the process of preparing for it: everybody, the host and guests together, would roll up their sleeves and wrap the pancake to cover the fillings. They would talk and laugh at the same time.”

“Today I found an article about *red packet*, a special thing in Chinese New Year... At New Year, children and young people are given money in red envelopes. This is known as *Lai Si* or *Hung Bao*. “The symbolic giving of the money represents a wish for wealth in the new year”.



The Lantern Festival

Email from China - This festival follows the Chinese New Year:

“Here is an introduction to the *Lantern Festival* we celebrated on February 5th this year. “The Lantern Festival (also called *Yuanxiao Festival*) is on the 15th day of the first Chinese lunar month. It is closely related to the *Spring Festival*. ... One legend tells us that it was a time to worship Taiyi, the God of Heaven in ancient times. ... Another legend associates the Lantern Festival with Taoism. ... A third legend is connected with Buddhism - followers believe that the power of Buddha can dispel darkness.”

Photographs from the school visit to Hong Kong



Grasshoppers for bird food



Bird market

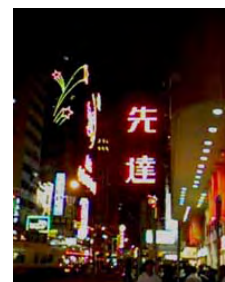


Calligraphy



Preparations for the Handover to China

In 1996 as a teacher of IT in the London Borough of Richmond upon Thames I linked with pupils in Queen’s College in Hong Kong via the internet carrying out a year-long project exchanging information. In 1997 I took a small group of pupils to Hong Kong to meet teachers and students from Queens College and various schools; this was just before the Handover of Hong Kong to China. We were in Hong Kong during Handover preparations and the arrival of the royal yacht Britannia. On my return to Twickenham I began the World InfoZone project lasting over ten years, working with individuals and [organizations around the world](https://worldinfozone.com/gallery.php?country=HongKong).



Hong Kong at Night

Hong Kong: <https://worldinfozone.com/gallery.php?country=HongKong>

China: <https://worldinfozone.com/gallery.php?country=China>

School emails: <https://worldinfozone.com/features.php?section=sMenu>



Dragon Boat racing on Twickenham Riverside

Business Improvement Districts – in Our Borough

A Business Improvement District (BID) can be described as a private sector business-led and business funded organization formed to improve trading performance in a defined geographical area. In the London Borough of Richmond upon Thames there are BIDs on both sides of the river.

The “Discover Twickenham” BID is a collective of Twickenham businesses, their website says its aim is to “help make Twickenham an even better place for residents, businesses and visitors.” The proactive “BeRichmond” BID provides information on businesses, offers and events in Richmond.

After a successful ballot, BIDs are funded by a mandatory levy charged on the business rate payers in addition to the business rates bill. However, not all traders are happy with this situation especially in the current economic situation.

After lockdowns and general worry following the Covid-19 pandemic local traders should be forgiven for finding it difficult to pay the BID levy. The levy goes directly to the Council with an on-line payment form on the LBRUT website.



Cllr. Phil Giesler, Business and Growth Lead Member of the Council and Business Champion, has been asked why businesses have been told they are being charged extra for services such as street cleaning, Christmas lights and defibrillator maintenance; services that previously would have been maintained by the Council.

It is not surprising that some traders are unhappy about paying extra tax for services that they feel should be covered by normal taxation.

One trader in Twickenham contacted the Tribune and said:

“The BID is up for vote this year, a NO vote will get them out and stop this extra tax on businesses that are already struggling. I haven’t been brought in a single pound from this company. However, I’ve brought in more money to the council through parking charges from my customers than I pay the BID.

My customers eat out in Twickenham and go up and down the high street spending money, so my business brings money into Twickenham, in fact it supports some of the other businesses more than the BID.”



**RICHMOND
NEIGHBOURHOOD POLICING WEEK
23RD - 29TH JANUARY**

Monday

Teddington / Hampton Wick SNT- Traffic Operation - 1500 – 1700 Kingston Rd O/S Udney Gdns and 1900 – 2100 Sandy Lane junction Shaef Way (targeting speeding, mobile phones, enforcement and educating all road users including cyclists).

Tuesday

Teddington / Hampton Wick SNT – Bike Marking – 1730 – 2000 Teddington Railway Station by the Cycle hub

Twickenham Railway Station – Knife Arch with SNT, BTP, drugs dog 0800 - 1100

Wednesday

Hampton North – Burglary Advice Street Briefing - 1100 – 1200 Cheeseman Close, Hampton

Friday

Catalytic Converter and Cycle Marking Event – 1000 – 1300 Old Deer Car Park, Richmond SNT, Traffic, Council Safety Team – vehicles being marked only BMW 1 & 3 series, Honda, Lexus, Toyota

BTP bike marking 1200 – 1700 Richmond Train Station

Richmond Safer Space – SNT, Council, BTP, Street Pastors 2100 - 0100

Saturday

Teddington / Hampton Wick SNT – Bike Marking & Contact Point 1000 – 1300 Teddington Lock Bridge, Ferry Road

Richmond Safer Space – SNT, Council, BTP, Street Pastors 2100 - 0100

**Please contact your local neighbourhood
officer's for more events in your area**



Dear Editors

Royal Mail's breach of its statutory duty in Jocelyn Road

I live in Jocelyn Road (postcode TW9 2TH). Over much of the second half of December 2022 and the first half of this month, we received no post. For days on end, nothing came through our letter box via the Royal Mail, which was odd as Christmas cards usually mean receiving more post, not less. We supposed that the postal drought was caused by industrial action, but were not seeing media reports of this happening more widely.

Over the past week, we have been receiving Christmas cards and other mail, either unfranked or postmarked with dates in December 2022. Over the last two days, we have received six more cards, one today with a postmark of 10 December 2022. Why this stockpiled post is being delivered in dribs and drab, rather than at one go, is of concern.

The 'word on the street' is that the postal service to Jocelyn Road was interrupted due to Royal Mail's postperson being on holiday for two weeks and then on sick leave for another two weeks. I have not yet been able to confirm the accuracy of that, but, for whatever the reason, it is obviously unacceptable for our postal deliveries to have been suspended.

If the regular 'postie' was not available, it's astonishing that Royal Mail didn't arrange for their work to be covered by another staff member. Has the Royal Mail cut its staffing so much that it can no longer provide temporary cover for staff absences? Has it been trying to recruit permanent staff, but been unsuccessful due to the Brexit-induced shortage of labour in the UK? If either of those possibilities were the case, why were temporary staff not obtained?

Royal Mail has a statutory duty under the relevant legislation to provide a universal six days a week service to all parts of the U.K. Based on the above, it appears that it may have wilfully breached that duty in relation to Jocelyn Road. I am about to make a complaint via the Royal Mail website and would encourage any others similarly affected to do likewise. Our local councillors are also 'on the case', so please notify them of your complaints.

Yours faithfully

Jonathan Haydn-Williams
Richmond, TW9

Dear Editor

Opposition to Twickenham Stadium hosting an arms fair

A group of 14 local human rights, peace and environmental organisations have written to the RFU and the Leader of Richmond Council objecting to the use of Twickenham Stadium, our much loved sports venue, as an arms fair on 23-26 January. The RFU has already received nearly 3000 emails of objection and a petition of local residents will follow shortly.

Among the 700+ delegates to the International Armoured Vehicles 'conference' are representatives from dictatorships and oppressive regimes who think nothing of deploying lethal weaponry against their own population and who routinely imprison and torture political opponents and activists, and even children, simply for speaking out.

It is no surprise that the RFU wishes to keep this event, which is so contrary to the ethos of sport, a secret from the local community.

Fiona Leach

Richmond and Kingston Palestine Solidarity Campaign, (richkingpsc@gmail.com)

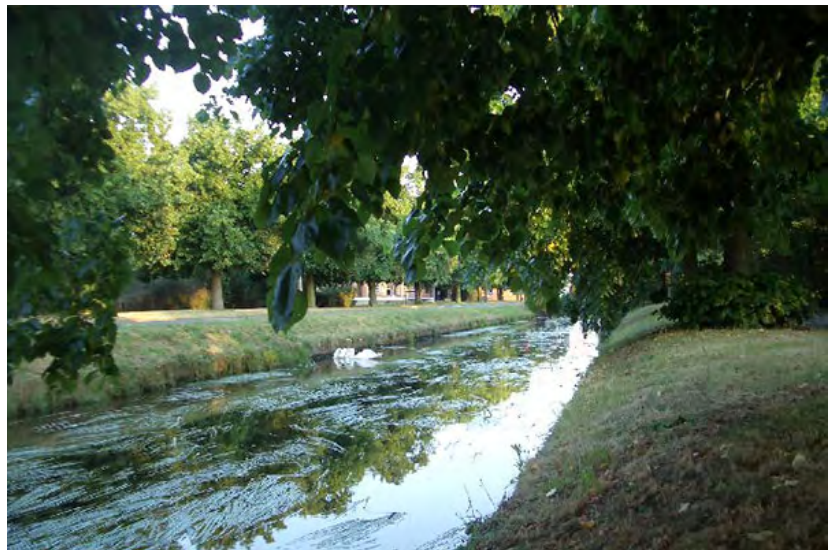
Walk the rivers with Friends of River Crane Environment

On Monday 23 January, the trustees of Friends of River Crane Environment (FORCE) are leading a winter walk from Kneller Gardens to Isleworth.

The meeting point will be at Kingfisher Bridge between Kneller Gardens and Mereway Nature Park, Twickenham.

The walk will be along the Duke of Northumberland River from where it branches from the River Crane to where it flows into the River Thames at Isleworth.

The winter walk will involve taking in the local sights, searching for wildlife along the riverbanks and a chance to discuss the history of the man-made river.



The event is free. Those wishing to attend should [book a ticket](#). Children under 18 must be accompanied by an adult.

Attendees should wear sturdy footwear and comfortable winter clothing for a social walk among nature.

If you would like more information on the event, contact events@force.org.uk.

2023 at the Royal Botanic Gardens, Kew

2023 at the Royal Botanic Gardens, Kew will feature an array of new festivals and exhibitions at both Kew Gardens in London and Wakehurst, Kew's wild botanic garden in Sussex. From perennial favourites including Kew's Orchid festival, Christmas at Kew and Glow Wild to new exhibitions from leading contemporary artists in the Shirley Sherwood Gallery of Botanical Art and bespoke installations across Wakehurst's wild landscape, there is something for visitors of all ages and interests to enjoy.

At the Royal Botanic Gardens, Kew we're dedicated to harnessing the power of plants and fungi to end the extinction crisis and secure a future for all life on Earth. With Kew's world-leading research, global partnerships and beloved gardens – home to the world's most diverse collections of plants and fungi – we're using our trusted voice to shape policy and practice worldwide. As a charity we rely on the critical support of our visitors, not only to sustain the gardens, but to protect global plant and fungal biodiversity for the benefit of our planet and humanity.

Throughout the year, visitors in receipt of Universal Credit, Pension Credit and other legacy benefits can enjoy entry to Kew Gardens and Wakehurst for £1. Launched in 2022, this £1 concession has been used by over 20,000 visitors to date, allowing people of all ages and incomes to enjoy a great day out in nature alongside our year-round exhibitions and temporary festivals. RBG Kew has also introduced a new Young Person's ticket for 16–29-year-olds. These tickets can be purchased on the day, or via kew.org, where booking in advance offers the best value.



Running in the Shirley Sherwood Gallery of Botanical Art until 5 March 2023, the start of the year offers the last chance to see *When Flowers Dream* by award-winning artist Pip & Pop. The ethereal exhibition encompasses immersive installations inspired by fairytales and folklore. Pip & Pop's work explores themes of consumption, and wish-fulfilment using eye-popping candy colours and a playful sense of perspective to immerse audiences in her uniquely wonderful world, illustrating a feast for the future.

Royal
Botanic
Gardens **Kew**

Richmond Council stands up for residents cut off during rail strikes

Cllr Alexander Ehmann, Chair of Richmond Council's Transport and Air Quality Committee, has written to the Department for Transport and South Western Railway, calling for serious consideration to be given to the impact of the rail strikes and associated service failures on communities in Richmond upon Thames.

He has called for a more equitable solution in future, with a focus on those areas of the borough which have little or no alternative methods of public transport.

“On strike days, we appreciate that it may not be possible to operate all services and stations but there should of course be an effort to provide and publicise as much of a service as possible. However, we consider there was no excuse to basically give up on running a service at so many stations on non-strike days. Outside of Richmond and Twickenham Stations, there was no service to speak of for a prolonged period over the Christmas period at North Sheen, Mortlake, St. Margaret's and Strawberry Hill. In addition, the communication became too complicated with the public having little idea if a train would run or a station would open - whether it was a strike day or not. Indeed it also appears that the Journey Planners could not keep up, with timetabled trains subsequently being cancelled, removed or simply not turning up.



“We have previously raised our concerns regarding the reduction of services at our local stations during lockdown which have not been fully reinstated, including at North Sheen, St. Margaret's and Whitton. The strikes made things much worse but the dire situation was compounded by the added uncertainty of trains would be running on non-strike days.

“I realise the solution involves both the railway companies and unions but, in the event of future strikes, South Western Railway must make a greater effort to run as much of the service as possible and should certainly not cancel services and close stations masse on non-strike days. Wholesale station closures leaving some communities with a service and others without are unacceptable – a greater effort is needed to provide a more equitable service. We need to be encouraging greater use of the railway to assist economic recovery and support climate change objectives but people will not return to the railway if the service is as unreliable as it has been, irrespective of whether there is a strike.”

CrusaderTravel



020 8744 0474

crusadertravel.com

Escapology Experts

info@crusadertravel.com



See our window



offers for

China Holidays!



Happy Chinese New Year

TWICKENHAM RIVERSIDE – SHOULD LBRUT ACCEPT A LEVELLING UP GRANT?

SHOULD THE LONDON BOROUGH OF RICHMOND UPON THAMES ACCEPT A LEVELLING UP GRANT for a project that includes “luxury housing” on Twickenham Riverside with one of the best views of the Thames - and with the “affordable housing” segregated on the far side of the Conservation Area next to a road?

The land involved in the planning application is currently in Trust and the Council will need to factor in the legal expense of acquiring the land, originally bought for the residents of the Borough for “public walks and pleasure grounds” in 1924 and now the site of the Diamond Jubilee Gardens.

THE FOLLOWING WAS APPROVED BY THE LONDON BOROUGH OF RICHMOND UPON THAMES ON 19 JANUARY 2023: “That capital budget additions of a total of £45 million to be profiled £1.5m 2023/24, £21m 2024/25, £18m in 2025/26, £4m in 2026/27 and £0.5m in 2027/28, noting that this will be funded by capital receipts generated from the project and available grants with an estimated net cost to the Council of £20 million.”

Towards the end of the Finance meeting, available on webcast, one councillor pointed out that the cost of the Elleray Hall development, in Teddington, had gone up 25% above the estimated cost but this was answered by Cllr Brown who said that the Council’s financial situation is robust; this statement was confirmed by other councillors at the meeting.



LEVELLING UP GRANT

The government website states that the London Borough of Richmond upon Thames (LBRUT) has been awarded funding for its housing projects on Twickenham Riverside (£599,522). However, it should be noted that the “Affordable Housing” is calculated on Habitable Rooms and the result of this is 47% Affordable Apartments and 53% Private Apartments, with the Affordable Apartments having the most 1-bed rooms and the Private Apartments having the most 3-bed rooms. Thus, the proposed development provides 50% affordable housing by habitable room which is said to meet the policy threshold.

***NOTE: THE LONDON BOROUGH OF RICHMOND UPON THAMES’ LINKED SITES STRATEGY**

Following the defeat of the Council administration after the 2009 Referendum – organized by the Richmond United Group - the Council quickly signed off their “Linked Sites Strategy” for their Twickenham Riverside plan and “Affordable Housing” linked to this site was built, mainly in Twickenham and Teddington. But this has been ignored by the present council and further Affordable Housing will be built, this time on Twickenham Riverside as mentioned above.

Saturday 28 January

11am – 5pm

Richmond and Hillcroft
Adult Community College
Parkshot, Richmond
TW9 2RE

**COMMUNITY
HEALTH
CHAMPIONS**

Winter Health Fair

Richmond Upon Thames' Community Health Champions and Public Health Richmond invite you to their first local health event, with a focus on winter health.

Come and meet your health and wellbeing services, who can support you during winter and the current Cost of Living crisis, as well as with your general health and wellbeing. It is also an opportunity to meet your local Health Champions.

Services:

- Pop up vaccine/flu jab clinic, blood pressure checks

Information and advice stalls:

- Fuel Poverty and Cost of Living Crisis
- Mental Health
- Healthy Eating
- Diabetes
- Menopause

- South West London ICS - NHS
- Cancer care
- Childhood Immunisation
- And many more
- FREE refreshments available

We hope to see you there!

Register for free
by scanning the QR code
or email: communityhealthchampions@richmond.gov.uk



Designed and produced by Richmond and Wandsworth Design & Print - wcd@wandsworth.gov.uk - TC2086(123)



IT'S DAMP JANUARY - IN MORE WAYS THAN ONE!

Most of us have done it: made a New Year resolution - often a mixture of guilt and optimism. And it inspires many of us to cut back on all those indulgences we've enjoyed over the festive period. I don't know about you, but January's a miserable enough month, without the extra burden of cutting back on alcohol! So I personally think it's better to have a 'Damp January', rather than a Dry one. According to research, the 'all or nothing' approach to alcohol consumption is not sustainable. Sunnyside, a mindful drinking app, reported that 35% of people aiming to take part in Dry January last year had a drink in the first week. And when you've slipped up, it's hard to motivate yourself to carry on. So, I'm trying to avoid alcohol during the week, (but not if a special occasion warrants indulging). Here are some of the new drinks that I've researched for you...and it's worth noting that lots of the websites have special offer pricing currently too.

Grown Drinks: With an impressively low abv of 4.5% and just 45 kcals per can, **GROWN** is a great light alcoholic drink; minus the headache. Instead of using soda or sugary tonics, GROWN keeps it natural using apple wine from Kentish culinary and dessert apples. This provides a distinctly crisp and refreshing mouthfeel. Botanicals are then added to give the drinks their unique finish. Although made in a similar way to a fine fruit wine, GROWN is 75% less calories than your average glass of white wine. Sustainably produced in Kent and crafted from a blend of organic & natural ingredients, these ready to go cans are available in two flavours; Sparkling Rhubarb & Ginger, and Elderflower & Fresh Basil. £15 - case of 4 from growndrinks.co.uk



Everleaf: I'd encountered **Everleaf** some years ago and really liked its 'ecclesiastical' notes, so I was pleased to discover that there are two additional expressions now. One of the bestselling non-alcoholic brands in the UK, Everleaf Forest was the first, and then Mountain and Marine in 2020 and 2022, Everleaf has also launched its signature serve, the Everleaf Spritz into ready-to-drink cans. Everleaf Forest is still my favourite - an intricate blend of 14 bittersweet botanicals including sweet orange blossom, vanilla, bitter gentian and more, it's bittersweet and complex. Everleaf Mountain is more aromatic and vibrant, while Marine is crisp and refreshing. But they are all good. Available to purchase online via



Everleaf's website and Amazon, with Forest available to buy at Marks and Spencer nationwide . RRP - £19 per 500ml

Pentire Coastal Spritz: Another range extension - and a really good one - is Pentire's Coastal Spritz. Naturally distilled coastal botanicals blend with Blood Orange, Sea Rosemary and Oakwood to create the perfect balance of natural bitter flavours and refreshing coastal tones. Ideal for aperitif moments, it can complement a meal, stand alone as a refresher, or be enjoyed as a preprandial. Available from Master of Malt or Pentire at around £22 a 50cl bottle.



Tame & Wild: This is a premium sparkling soft drink that's available in four fruity flavours, all inspired by the British countryside. It's founded by Yorkshire strawberry farmer Annabel Makin Jones, who wanted to create an adult soft drink that was artifice-free, bursting with flavour. With four flavours (Damson, Rosehip & Passionflower, Rhubarb, Elderberry & Rose, Strawberry, Cucumber &



Lime flower, Blueberry, Dandelion & Lavender) these award-winning drinks are less than 30 calories and have less than 5g of sugar. Not cheap at £2.25 a 275ml bottle, but I'd suggest trying the full range in the gift pack at £10 Available at TameandWild or premium stockists including Selfridges, Fortnum & Mason and Daylesford Farm Shops.

Thatcher's Zero: Crafted using a selection of bittersweet apple varieties, the blend of traditional and modern apples used in Thatchers Zero creates an alcohol-free cider with body, smoothness and character. With its crisp, medium dry character and fruity aroma, Thatchers Zero retains the taste and character of a true cider but without the alcohol. To be honest, one wouldn't realise it's alcohol free. It's also gluten free, vegan and widely available in Sainsbury's, Tesco Asda and the Co-op at around £2 a 500ml bottle.



Ticket beer: This is a saffron-enriched alcohol free, vegan pale ale (0.5ABV) with a strong Persian influence (infused with saffron, lavender and orange), which mingles with malt barley to create an interesting, balanced beer. **Ticket** will appeal to many women who, like me, aren't usually beer drinkers. This beer is refreshing and pairs well with food. Available from Ticket directly or WholeFoods Box at £3 for 330ml can or bottle.



Guinness 0.0: The Guinness brewers have worked tirelessly to ensure that **Guinness Zero** lives up to the Guinness name with its smooth, cool, dark taste. The alcohol has been removed without removing the character of the brand. My husband was very impressed indeed when he tried it. It's also low calorie at only 80 calories per standard 500ml can. Widely available in major supermarkets for around £1 per 500ml can.



Gordon's Alcohol-free 0.0: Like Guinness, when you have a brand name to live up to, it's important to get the zero alcohol version correctly made. **Gordon's 0.0** uses its usual distilled botanicals and the result contains no more than 0.015% ABV. It delivers a pretty reasonable attempt at the bold, piney juniper led character you'd expect from Gordon's but is slightly sweet. But it's reasonably priced at £12 and widely available.



Tanqueray 0.0: I have to say that I preferred the **Tanqueray 0.0** to the Gordon's when I tasted them. Both are juniper-heavy in the style of traditional London Gins, but Tanqueray 0.0 has a bit more bite or bitterness without the lingering sweetness of the Gordon's. The Tanqueray is also widely available and slightly more expensive at around £14 a bottle, but in my opinion worth paying the small premium.



Mavrik: I'm really impressed with these four non-alcoholic cocktails from Mavrik. They taste as though they actually contain some alcohol. Flavours are: Aromatic G&T; Cuban Mojito; Venetian Spritz or Storm & Spice and only 50 calories a can. Available from independent stockists or online from [Mavrik](https://www.mavrik.com), at £9.75 for a tasting pack of all four flavours. then you can create your own mixed case of 12 for £23.80



Crodino: If, like me, you're a Negroni fan, then I would urge you to try **Crodino**. a surprisingly Non-Alcoholic Italian Aperitivo. With a distinctively rich and bittersweet taste (plus the fact that it's produced by Campari adding 'street cred') Crodino is great. It's easy-to-serve, in a long-stem wine glass filled generously with ice and finished with a slice of fresh orange. And it's widely available too, from Waitrose and Sainsbury's at £4 for 3x175ml bottles.



Cheers!

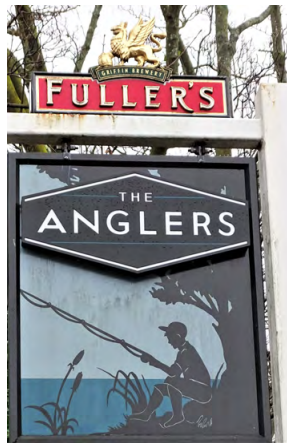
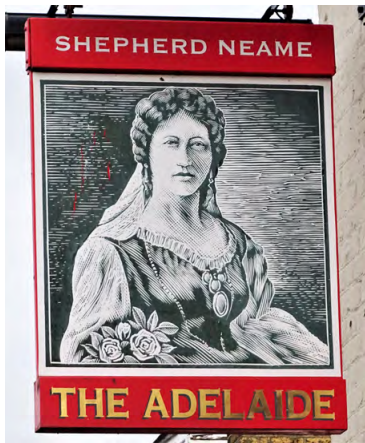
TRAVELLER'S TALES 139

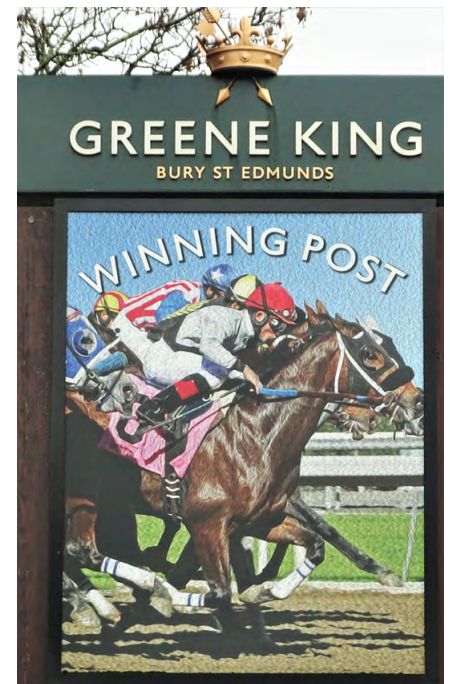
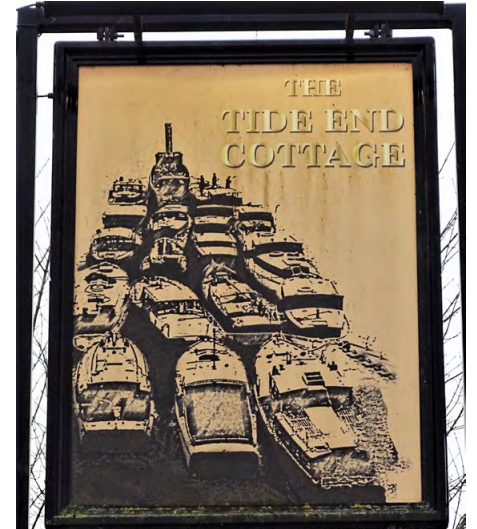
KNOW YOUR PUBS - PART TWO

Doug Goodman introduces more local pubs

Two weeks ago, in issue number 137, we highlighted the traditional signs of 18 pubs in Twickenham, Teddington and St. Margaret's. This time, in part two of 'Know Your Pubs', we visit another 18 establishments in the same local areas. Thirty six pubs within walking distance of the centre of Twickenham – assuming you like walking to a good pub – seem a healthy number to explore during the coming months. If there are any places I have omitted please send an email to The Tribune and I'll be delighted to pay a visit.

Remember our pubs are having a tough time: home consumption of cheap supermarket beer and increased operating costs for licensed premises have contributed to the closure of many fine pubs. At this time of the year a welcoming pub with a warm fire, comfortable surroundings, a wide selection of beers and other drinks and good food is a delight. So support your local hostelrys.





Welcome! The Year of the RABBIT

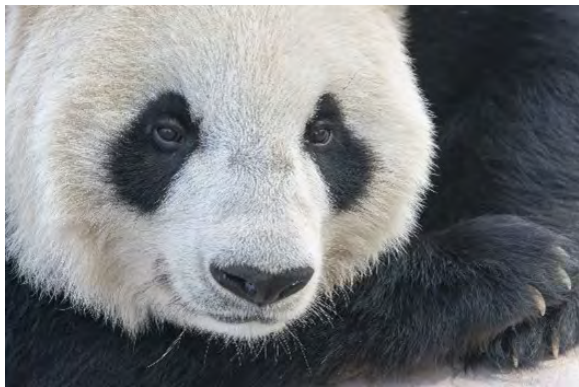
By Bruce Lyons



At last China is open! In April Wendy Wu are returning with their famous eclectic selection of tours, they also have a SALE (That's right a SALE !!) on till 31st and they are offering £300 off – no single supplements, upgrades on flights, 2 passenger flies free (that's only the flight – not the tour)

The have a wonderful range of tours with varying durations from 8 to 26 days. They always use qualified local guides, some people find the pace a bit fast, but the experience is great- they always use local hotels and usually local hostelryes for lunch breaks. The tour titles include; The Majestic Yangtze , Wonders of China, China Experience, Glorious China, In Pursuit of Pandas, China Delights, China and Tibet and Tibetan Winders.

I do remember hiring the Octagon Room when Wendy first came to England in the late 90's (Brought up in Tibet she first started in travel in Australia and then came here). And she came



down to Twickenham with a very Heath Robinson-esque Audio Visual show and told a packed venue all about China. I am

sure it was my most successful presentation and by the following week we had

booked over 25 tour bookings to China. Since then, politics apart the destination has been on many peoples "Wish List". Many of the tours visit the Terra Cotta warriors, The Great Wall of China, Pandas, the Yangtze River and many wonderful cities.



Mercury is also returning from September with their two tours Wonders of China (15 days from £2089) and China Discovery Tour (10 days from £1539)

Adventure Companies Exodus and Intrepid are back from August too – and if you hurry (end this weekend) Intrepid have a 25% sale.

But you must beat your way down to Church Street Square thru the jungle of Bamboo to get it booked (It's a January sale!!)

Pop into us at Crusader Travel, 58 Church Street for a coffee or a bowl of rice and we'll see if we can satisfy your curiosity.

www.crusadertravel.com



STILL KEEPING YOUR NEW YEARS RESOLUTIONS?

By Deep Patel

The party poppers have been well and truly cleared away and the Christmas trees are snugly stashed for a long rest in the loft or slung out in the streets like an old newspaper waiting to be mulched (obviously not the Twickenham Tribune as nobody would sling out such gold). So what next...well we focus on new starts, fresh beginnings and those dreaded resolutions...yes you know the ones...the ones which seem so achievable on the 1st of January but soon seem impossible ...perhaps you are like me and have had the same resolution for the past 15 years (no I am not rubbish at keeping them, just that some things take time to perfect). Are resolutions really the way forward though?



Why must we focus all our energy on one day alone to start new things? I mean we are basing this on human made labels are we not? Humans love to quantify, label and categorise everything do we not? Why though? So we can try and bring some structure into our lives and an element of control to counter the fear of the unknown in an existence which in actual fact is everything but structured and controllable...

In 154 BCE a rebellion forced the Roman senate to change the beginning of the civil year from March to January 1st. This was partly done to honour the month's namesake: Janus, the Roman god of beginnings, whose two faces allowed him to look back into the past and forward into the future (no I am not making this up, it is fact!). So we can see, through good reason though it may be, we humans are the ones who made the new year start on the 1st of January. Anyway, all this is very well, and I have absolutely no problem with it, just must we place so much emphasis on just one day, especially when we are relating it to an opportunity to better ourselves in some way? The disappointment of failure regarding our January 1st resolutions often makes us lose hope and give up all together (or is that just me I wonder?).

So what do I propose instead I hear you say? Well, what I propose is that we enjoy January 1st as the start of a new year, but remember that we don't need a finite date or time to make improvements to ourselves...every day we wake up in the morning and open our eyes we should thank God as that in itself is a huge blessing...it's a new beginning...every day is a new beginning...we are born again every day as we are given a chance to live again...and what matters most is what we do today...not yesterday and not tomorrow as neither are "real"...we only have today (sounds like a great name for a song right?).

The most important person in your life is who? Your parents or your children? Maybe your husband? (ok less of the jokes)? Maybe your wife? (I said less of the jokes)...in realty the most important person in your life is YOU, as in order to look after the afore mentioned, you have to make sure you are happy and the best you can be yourself first. So your self-care and improvement are worth a lot more than just one day...they should be your priority everyday...

If you have set some resolutions this year and you have a wobble, please remember that is OK, and choose to focus also on the one resolution that we should all have, not just on the 1st of January, but each day we open our eyes in the morning...that of continual improvement, to be better today than we were yesterday, even if ever so slightly, but just better, for ourselves and all of the people around us who love and care for our wellbeing too, because regardless of the 1st of January, every day that you open your eyes will ALWAYS be the first day of the rest of your life...so if you have one resolution for life, make it to make each day better than the last and you won't go far wrong in living a satisfying, full and content life.

I always like to end an article with my usual kindness to creatures tips...this week especially I would like to bring attention to sweeping up outdoors, in your sheds or patios...please be mindful...many little lives that we cannot even see lurk and live their...try not to over sweep too close to edges as that's often where they are and try to do one thing this week...I want to appeal to all the wonderful readers of the Tribune this week... during the week ahead, any little insect you see in your homes, please show mercy and place them out to safety instead of eradicating them or ending their lives...your tiny act of kindness in doing that alone will bring you good karma...something good will happen...write in and tell me after...it will...eventually... you will see!

Those who follow my articles know, what I am about to say about kindness to the little lives... but just in case you have forgotten, or indeed are a first time reader...I always like to share these little good-karma gems to celebrate kindness in all its forms, helping each other and all the life forms on this beautiful planet we call home...

As I always say, we are not the only inhabitants of this beautiful planet and there is a kind way for everything...If you have rodent issues, consider live capture traps where you can catch the rodents alive and release them in woodland or parkland areas far from homes. Try electronic high-frequency sound deterrents (check online for ones with good reviews and ones that are safe for your pets if you have any). Put empty jam jar lids filled with white vinegar all around areas where you don't want them to stop them without harming them (they HATE the smell of white vinegar). This also works for foxes, squirrels, mice and rabbits. Just picking up a slug off a pavement with a leaf and moving it over a wall counts as a good deed... choosing a kind way to stop ants (like talcum powder around where they come but not on them) counts as a good deed. Avoid sweeping/washing the garden patio too often to help save countless tiny almost invisible little lives that live there (particularly under large pots in the garden, hence I say gently lift the pots if you need to move them rather than dragging them to avoid crushing little lives).

As I always say...the true key to our own happiness lies in the happiness of other life forms... until the next time...have a lovely week ahead and look after the smaller life forms and the universe will look after you. For further tips, check out my Facebook page "Kind World". As always...Peace, love and good karma to all Xx

Remember...

"Every Day is a New Beginning"...



Macbeth

by William Shakespeare, adapted by Lucy Morrell

Rose Participate and Oldenburg State Theatre at The Rose Theatre, Kingston

The stage is set, dark and dangerous, mean and menacing. The cast is ready, raw and ragged, with robotic, jerky movements contorting their bodies. This gritty version of Shakespeare's *Macbeth* spares nothing. Big sound, flashing lights, screeching voices bring to life this tale of murderous treason and tyranny, tragedy and treachery at a dizzying pace. Non-stop intense action zips past as blood is spilt in battle in a quest to seize power.



Directed by Josh Mathieson and Lucy Morrell, six young actors of take on fourteen roles in a co-production first performed in Kingston's twin town, Oldenburg in Germany.

Designer Takaya Kobayashi, a Japanese scenographer working in Oldenburg, crafted a set to suit both theatre spaces. The matte textured backdrop lends a post-Apocalyptic vibe. His costumes too: studded leather, ripped denim, animal pelts, camouflage fatigues, wild wigs for the three witches whose incantations around the seething cauldron never fail to disturb. 'Double, double, toil and trouble; fire burn and cauldron bubble,' they intone, writhing as they stir in morsels you won't get on any cookery show. Joshua Fernanades (who also plays Malcolm), Jack Bartlett (who also plays Duncan and Macduff) and Alessandra Carli (who also plays Ross and a drunken porter) give it their spellbinding all.

Jacob Towey owns the stage in the title role. His assured and confident Macbeth is haunted by the bloody ghost of Banquo (Cathra Plant who also plays Lady Macduff). His demented rantings are matched by Amy Lawrence's Lady Macbeth. She is tormented by nightmares as she sleepwalks Dunsinane fortress, trying in vain to cleanse her hands of blood. 'Out damn spot! Out, I say,' she wails before guilt drives her to suicide.



The blood-thirsty butchery and violence, her hanging, assassinations, stabbings, Macbeth's beheading are either off-stage or semi-shielded from the audience, but still impactful. This youthful production of *Macbeth* packs a powerful punch.

Read Gill Martin's review at www.markaspen.com/2023/01/14/macbeth-ryt

Photography by Stephan Walzl

Peter Pan, the Musical

by Piers Chater Robison, based on J.M. Barrie
Step on Stage at Hampton Hill Theatre

What an absolute joy to see a musical by Step on Stage, one of the Richmond's popular youth theatre companies, where the young cast's comradery shines through in this adaptation of *Peter Pan*, directed by Emma Tiniswood and Jasmin Carmody.

Themes such as the journey to adulthood from childhood through adolescence are explored, and the effect of parent-child relationships and childhood imagination in this transition. The complexities of these emotions were touchingly conveyed by Wendy (Freya Peltonen) and Peter (Ivor Duke), from the duet "Come Away" when they begin forging their connection, through to the ending when Wendy faces the realisation that Peter cruelly refuses to grow up and playing father to her mother is no more than make-believe.



The scene is set in the nursery of the Darling Family with the cantankerous Mr Darling (Callum Arthurs) and nurturing Mrs Darling (Lilia Liebrand). The mischievous and mute Tinkerbell (Rosie Gonzalez-Penny) achieves the challenging feat throughout of expressively communicating through her body language and facial expressions.

However, it is not only the principals who beautifully provide song after song; we are treated to precisely performed ensemble pieces, with accompanying dance routines, reflecting the creative talents of choreographer Ashley Johnson and musical director Emma Tiniswood's accomplished live band. In Neverland, we encounter the Lost Boys, with their ripped clothes and unkempt hair, tribal make-up, bone and seed necklaces and bright tropical hair feathers. The jazzy choreography includes impressive gymnastics culminating in a human pyramid.

Jasper Simmons delightfully camps up his effortless portrayal of Captain Hook, leading his motley crew of pirates, including Smee (Tilly Cooke), with aplomb and is thrilled about Peter's demise in his flamboyant performance of "Goodbye Peter Pan".

The pirate ship is cleverly recreated, Jolly Roger atop, and Hook's terrifying crocodile nemesis is effectively comically incorporated by the smallest cast member peddling across the stage in a green go-cart in juxtaposition to Hook's petrified reaction.

It was clear from start to finish that a huge amount of thought and commitment had gone into this production. All in all, *Peter Pan, the Musical* is a very accomplished and polished production of this literary classic.

Read Thea Diamond's review at www.markaspen.com/2023/01/15/peter-pan-sos

Photography by Enzo Dobbie

Teddington Theatre Club Production at Hampton Hill Theatre

Event Title: **The Edge of Darkness** by Brian Clemens

Date: Tuesday 24th – Saturday 28th January 2023

After her disappearance several years ago, Emma finds that her memory is damaged; there is much she does not recognize or understand. Why does she appear familiar with certain Russian phrases; why has she such a horror of a harmless silver bell, of a portrait on the wall, of knives?

Time: 7.45pm

Prices: Tickets from £14

Address: Auditorium Hampton Hill Theatre, 90 High Street, Hampton Hill TW12 1NZ

Website: www.hamptonhilltheatre.org.uk

A woman's silhouette is shown in profile, standing in a doorway. The scene is dimly lit, with a warm glow from a window on the left and a greenish light on the right. The woman is wearing a dark coat. The background is a mix of dark and light tones, creating a mysterious atmosphere.

THE EDGE OF DARKNESS

AN EDWARDIAN THRILLER

by Brian Clemens

TUE 24 JAN – SAT 28 JAN 2023

teddingtontheatreclub.org.uk

The logo for Teddington Theatre Club (ttc) features a stylized red bird or leaf icon above the lowercase letters 'ttc' in a bold, red, sans-serif font.

ttc

Whitton Library to hold Holocaust Memorial Day event

Join us for an evening of talks and a film screening to commemorate Holocaust Memorial Day.

The special event will be held on Thursday 26 January at 7pm at Whitton Library Annexe, 141 Nelson Road, TW2 7BB.

There will be a film screening of a short movie called "Shemira" by acclaimed director, Adam J. Wells, followed by a Q&A.

We will mark and remember the lives lost in the Holocaust, and later genocides. Entry is free and refreshments will be available.

For more information, please call the library desk at 0208 734 3343.



Richmond Hearing Voices Friendship Group

The Hearing Voices Friendship Group supports residents who hear voices and those who support them.

The group is free and confidential.

All are welcome to come to the group meeting on the last Thursday of each month at Richmond Library Annexe (TW9 1DH) from 11am to 1pm, to offer information, support and understanding.

For further information please contact Wendy Micklewright on wmicklewright@yahoo.co.uk.

View more [details about the group](#).



GREAT MENTAL HEALTH DAY

Whitton Community Event

27 JANUARY 2023

11:30 AM - 2:30 PM

WHITTON COMMUNITY CENTRE
PERCY ROAD, TWICKENHAM, TW2 6JL

Join us for a free, walk-in Great Mental Health Day celebration!

In addition to scheduled well-being workshops, refreshments, free basic health checks and healthy cooking information, organisations will be available to share information about local services and advice on how to look after your mental health.

**Get a FREE Basic
Health Check and
you'll be entered
into our raffle!**

Win a Xiaomi Mi Band 7 fitness watch, 3 month leisure pass from Richmond Council or other great prizes!

Event Schedule

- | | | | |
|--------------|---|--------------|---|
| 11:30 | Start of event | 13:30 | Mindfulness Session
with Richmond Borough Mind
30 minutes |
| 11:45 | Walk-in Dance Out Session
with SoulHub
20 minutes | 14:00 | Well-being Session:
Invest in Yourself
with United Response
30 minutes |
| 12:15 | Well-being Session:
Invest in Yourself
with United Response
30 minutes | 14:30 | Raffle and close of event |
| 13:00 | Lunch
catered by Surplus to Supper | | |



St Mary's University

St Mary's University Announces Full Computer Science Scholarship

St Mary's University, Twickenham has announced [a new full scholarship](#) for its BSc [Computer Science programme](#) to help boost diversity in computing for a student joining this September.



The award covers three years tuition fee for one student, subject the successful completion of each year of study, and is worth £27,750. The aim of the scholarship is to support a student from an underrepresented group in computing gain the skills they need to succeed in their career, including:

- Female students,
- Students from Black, Asian, and other Minority Ethnicity backgrounds,
- Students with a registered disability

Students do not need to submit a separate application for the scholarship, [all eligible students](#) who accept an offer to study Computer Science at St Mary's before the June 8th UCAS decision deadline will be automatically considered and the successful student will be contacted ahead of September 2023.

Speaking of the Scholarship, Dean of the Faculty of Sport, Allied Health, and Performance Science Dr Leanne Griffiths said, "Our BSc Computer Science has been designed with employability as

its heart. We want to ensure all of our graduates are equipped with the skills they need to success in industry from the start of their careers. I

am delighted that we are able to offer to this scholarship to help a student from an underrepresented background start their computing career at St Mary's."

St Mary's recently announced an Office for Students (OfS) capital grant worth £1.7m to develop a suite of Computer Science laboratories. The grant will enable the University to establish state-of-the-art facilities, allowing students joining its [Computer Science BSc](#) and [MSc](#) programmes to be a forefront of developments in computing.

The facilities, which will be amongst the most modern computer science facilities in the

country when they open, will include state-of-the-art computing equipment in a contemporary setting designed to enhance the student experience and prepare them for the professional world.

The new Computer Science programmes have been designed collaboratively with industry IT experts and senior IT managers to equip graduates for the digital job market of the future. The degrees give students training in data management, artificial intelligence, cyber security, computer programming, cloud computing, IT service management and financial operations.

Speaking of the grant, St Mary's Vice-Chancellor Anthony McClaran said, "I am delighted that the Office for Students has awarded this funding to St Mary's. The new facilities will mark a new chapter for the University, and I look forward to seeing students using them next year."



St Mary's
University
Twickenham
London

RICHMOND SAFER NEIGHBOURHOOD BOARD



NEIGHBOURHOOD WATCH

NEW KNOWLEDGE NIGHT

Wed 15th Feb 2023 7-9pm

Duke Street Church, Duke Street, Richmond.

The agenda will include -

- A presentation on the use of Tasers by the police
- Cybercrime update – keeping safe from scams
- Violence against Women and Girls (VAWG) - local overview
- Police / Community Engagement overview (SNB, PLGs etc)

Knowledge Nights are aimed at raising awareness amongst our NHW members and the community about various aspects of local policing and crime that may affect or interest them.

Please email nhwatchrichmond@gmail.com if you wish to attend as the venue has a limited capacity.



Five things to know if you are travelling to Elland Road

Some practical tips and things to be aware of if you are attending Brentford's Premier League game against Leeds United on Sunday

Written by Brentford Football Club

Brentford take on Leeds United on Sunday (2pm kick-off).

If you are traveling to Elland Road, here is everything you need to know to ensure you are ready for your visit.

Getting to Elland Road

Elland Road is the 37,792-capacity home of Leeds United Football Club.

Elland Road sits just outside of the city centre, which has a wide range of restaurants and shops that Bees fans are recommend to use, as amenities around the stadium are limited.

Leeds United Football Club

Elland Road, Leeds, LS11 0ES

Travel and transport

Leeds railway station is located on New Station Street, Leeds, LS1 4DY which is two miles from the stadium.

A matchday shuttle bus service operated by First Leeds Buses, numbered R2, departs from Sovereign Street, adjacent to Leeds station, to the stadium.

The service departs 90 minutes before kick-off and runs at frequent intervals.

At the end of the match, a frequent service will operate back to Leeds city centre. Prices are £3 return for adults and £1.50 concessions.

Bus numbers 51, 52 and 55 also travel from Leeds city centre along Elland Road and stop outside the stadium.

Please note that bus stops outside the ground are suspended one hour before and after a match.

Parking

Bees fans are able to park in the park and ride car park on Bobby Collins Way, which is near to the away coach car park.

Cars can park for £6; street parking is restricted due to resident permits.

Blue badge holders are able to park in Fullerton, which is close to Elland Road. Please display your blue badge and park in one of the first two rows - no payment will be required.

The car parks are managed by the parks and countryside service of Leeds City Council and can be contacted by telephone on 0113 395 7400, or via email at parks@leeds.gov.uk

Ticket information

The away ticket office at Elland Road is adjacent to the away turnstiles and will open 60 minutes before kick-off.

All ticket collections must be pre-arranged through the Brentford's ticket office (tickets@brentfordfc.com).

Photo ID will be required to collect your ticket.

We would also like to remind fans travelling to the Elland Road to observe and respect the family friendly seating.

Anyone who holds a ticket in the family friendly seating area is reminded that they should be seated for the duration of the match.

Your matchday at Elland Road

Away turnstiles at Elland Road are located within the west stand, entrances one and two.

Howards Bar is a dedicated bar within the stadium for away fans which opens three hours before kick-off.

There are no specifically designated away pubs in the centre of Leeds.

Bags sized A4 and under are permitted at Elland Road.



Hampton Rangers Club House

by Hampton Rangers Junior Football Club in Hampton

Hampton Rangers Junior Football Club aim to build a new clubhouse for the use of all players, their families and the wider community. Find their Crowdfunder page [HERE](#).

Who are we?

Hampton Rangers Juniors is an England Accredited youth football club based in Hampton Middlesex. Formed in 1969 to provide a safe place for children to go the club has continued to grow over the last 50 years .

We are affiliated to Middlesex FA and provide coaching and organised games to over 170 children across 14 teams from the ages of 6-16. The club has had Youth Charter Standard status for the last 3 seasons.

In 2019 we also become a Wildcats centre providing fun football for girls aged 5-11. We currently have 13 teams playing in the Surrey youth league from under 7's-under 16's

Why are we crowdfunding?

We have come a long way with little. The amazing all weather pitch was supplied to us by a premiership club in 2016. We then funded the laying.

The pitch is now great but at the moment we are using an **old shipping container as a makeshift club house/ changing room/meeting room.**

The current container we are using is no longer fit for purpose, the floors are rising, the ceiling is crumbling , its cold, damp and uncomfortable . There is very limited space inside for people to use it as a changing room and it is **time for it to go!**

What We Would Like

We would like to raise funds to build a **new and sustainable clubhouse complete with kitchen and a community room** where players, parents, carers and the community could meet. An artist impression of the new facility is below.

We would like to install a kitchen & bar along with seating areas where parents can enjoy a coffee whilst their child trains or players can enjoy a drink after their match or training session. We would like to provide snacks on match or training days. It would also be used for social events such as our end of year presentations and community fund raisers.

The club house would be a great asset when we are holding our holiday clubs, it would provide somewhere safe and dry for kids to play when it rains and somewhere for them to sit and eat lunch.

The existing 'clubhouse' will be repurposed as dedicated changing facilities.

The club has operated for many years without a true clubhouse and we feel this is a important step in the next stage of our development.



NATIONAL LEAGUE FOOTBALL CLUB FUNDRAISING TO KEEP FAMILY IN BOROUGH

Hampton & Richmond Borough FC are raising money to help keep loyal fan, Jay Blake, and his family in the Borough after they were served with an eviction notice before Christmas.

The Blakes are now obliged to leave their current home by Friday 20 January, leaving the young family in limbo and without a place to stay six weeks, before they move into their next home in early March.

With no other options available to the family, their local football club are now stepping in, calling on the HRBFC Community to come together in raising the funds to keep the Blakes in the Borough of Richmond Upon Thames – where their eldest son, with specific educational needs, attends a specialist school.



The official [‘GoFundMe’](#) page has so far received £400 in donations of the £5,000 goal, stating “It would be fantastic to see the HRBFC community, the people of Richmond, and anyone else who believes that no one should be homeless in this city, come together to help a young family keep a roof over their head for the next six weeks.”



“If we exceed the target, or the final expenditure ends up as below the amount raised, we will donate the remainder to the Food Bank as run by the Beaver Trust.”

In a time where many are just one unexpected bill away from disaster, Hampton & Richmond Borough FC hope they make a real difference for at least one fan and his family.

Anyone able to offer assistance with emergency accommodation, or who would like further comment, should contact:

media@hrbfc.co.uk



ENGLAND MEN'S U20 TEAM NAMED FOR LOUGHBOROUGH UNI CLASH

England men's U20 head coach, Alan Dickens, has named his team to play Loughborough University on Saturday 21 January (KO 12:00) at Loughborough Uni.

Lewis Chessum will captain the team at lock and packs down in the scrum alongside Danny Eite.

Archie McArthur, Calum Scott and Afolabi Fasogbon start in the front row, while Finn Carnduff, Tristan Woodman and Rob Nixon make up the backrow.

Charlie Bracken and Monty Bradbury pair up in the halves, with Joseph Woodward and Rekeiti Ma'asi-White lining up in the centres.

The back three sees Cassius Cleaves and Tobias Elliott on the wings, with Sam Harris at the back.

Speaking ahead of the game, England men's U20 head coach, Alan Dickens, said: "The game against Loughborough University is another excellent opportunity for us to put our training into practice and assess how the players work as a group.

"We had a strong hit-out against Oxford University last Saturday, and our preparation in camp this week has also gone really well. Each players' commitment and mindset has been fantastic as we continue preparations for our Six Nations opener against Scotland at Twickenham Stoop in two weeks' time."

- | | |
|---|--|
| 1. Archie McArthur (Gloucester) | 9. Charlie Bracken (Saracens) |
| 2. Calum Scott (London Irish) | 10. Monty Bradbury (London Irish) |
| 3. Afolabi Fasogbon (London Irish) | 11. Cassius Cleaves (Harlequins) |
| 4. Danny Eite (Gloucester) | 12. Joseph Woodward (Leicester Tigers) |
| 5. Lewis Chessum (C) (Leicester Tigers) | 13. Rekeiti Ma'asi-White (Sale Sharks) |
| 6. Finn Carnduff (Leicester Tigers) | 14. Tobias Elliott (Saracens) |
| 7. Tristan Woodman (Sale Sharks) | 15. Sam Harris (Bath Rugby) |
| 8. Rob Nixon (Gloucester) | |

Bench

Finn Theobald-Thomas, Nathan Jibulu, Asher Opoku-Fordjour, George Patten, Tim Hoyt, James Halliwell, Harry Browne, Robert Carmichael, Josh Manz, Zach Carr, Nye Thomas, Jack Walsh, Louie Johnson, Benjamin Waghorn, Will Gilderson and Connor Slevin

Venue: Loughborough Uni



England men's U20 Six Nations fixtures

Friday 3 February – England v Scotland – KO 19:00 GMT – Twickenham Stoop, London



Tuesday 24th January 4-5:30pm

Professor Tina Bruce CBE:

Let them play!

How to observe, support and extend children's learning



Tina is a highly respected Froebelian academic/practitioner in the area of play-based learning and early childhood development, education and play.

Location:

Outdoor Owls Richmond
R & P Unitarians Church,
Ormond Road,
Richmond,
TW10 6TH

FREE EVENT

Invite your friends!

SIGN UP here:

outdoorowls.com/events

Limited spaces available

first come first serve



Ambulance staff feel 'deeply conflicted' about striking, says chief executive

Jason Killens said many are 'enduring' huge pressure and feel they cannot do the job they trained for

AMBULANCE staff feel "deeply conflicted" about taking strike action according to Welsh Ambulance Service chief executive Jason Killens.

He told GB News: "We've got the first day of action by Unite the union today and a further day on Monday, that follows two days of industrial action in the last couple of weeks by GMB here in Wales and obviously, across the rest of the ambulance sector in the UK.

"The staff I've been talking to in the last few weeks are saying to me that they joined the ambulance service like I did to help people to provide great care to patients when they need us most.

"And in the choices that our staff are making, our people are making, they feel deeply conflicted, because on the one hand, they joined to provide that great care to patients, when they need it most. But on the other, they feel that they can't currently do that, because of the pressure across health and social care.

"They feel that the time is now ripe for them to make their stand their point with their unions about the pressure and the working conditions which they are currently enduring."

He added: "The dispute arises out of one of pay, which is with government, not with me or with us as the employer.

"These workplace issues are very much in the minds of our clinicians and our control room staff in the choices they're making."

In an interview with Bev Turner, he said: "There's no doubt in the staff that I've been talking to in the last few weeks that many of them feel now that the pressure is such that they can't do the job that they joined for, they can't provide the great care that they want to offer to patients.

"When they call us when they need us most often, our paramedics and emergency medical technicians were seeing one or two patients in a 12 hour shift and now it is six, eight or ten patients a shift.

"They're concerned about the impact on patients and patient safety. And of course, we do know that some patients sadly, are coming to avoidable harm as a result of the delays that are occurring.

He added: "It's a complex picture, delays at the emergency department happen, which hold our crews there and prevent us from responding and those delays happen because of flow through the hospital not being as efficient as it should be.

"That's because there are many patients in beds that are medically fit for discharge that could be in communities, but can't be because of pressure in adult social care, so this is a kind of multi-sector issue.

"But our ambulance staff, certainly our ambulance workers, paramedics, call centre staff and others do feel very strongly now that they think they need to make the point to government and others that the pressure is such their working conditions are such that they feel they need to take strike action."



EU citizens living and working in the UK without a visa, now face the real prospect of arrest

Immigration Enforcement officers have been issued with new guidance, allowing for the detention and removal of those EU Nationals who are working here illegally.

GB News was given exclusive access to follow immigration officers as they raided businesses in London, arresting two EU citizens from Romania, who officers said were in the UK without work visas.

The raids targeted several companies in south east London.

As immigration enforcement and police officers arrived at a skip hire business, GB News filmed as the officers moved fast to stop their suspects disappearing. The teams searched some of the skips and other areas as they made their way across the site. Among those they were looking for were at least two Albanians.

Immigration enforcement officers said they believed one of the men ran off as they arrived.

The other man was found behind the wheel of a works vehicle.

But after a number of checks, officials said he appeared to have a legitimate work visa.

Nearby, the rest of the workforce gathered in the company's offices as officers checked their status.

After interviewing a Romanian man, he was placed under arrest on suspicion of working in the UK without a proper visa.

The senior immigration enforcement officer on the raids told GB News that his team had been issued with "new guidance in the past week", allowing for the arrest of EU nationals living and working here illegally.

Conservative MP Lee Anderson, who sits on the Commons Home Affairs Select Committee, welcomed the apparent tougher approach.

He told GB News: *"EU citizens who are here and they're working when they should not be working, then quite frankly, they're breaking the law.*

"And my view on anybody who's here breaking the law from another country is they should be sent home pretty much straight away.

"It's a big problem we've got. We don't know how many people have got into this country and are working in the black economy.

"I believe this is happening up and down the country in every town and village and city, there's this hidden population of people who are working that should not be working.

"It's great news that this guidance is making sure that wherever you're from, even if you're from the EU, you get sent home, that that's got to be welcome news."

Following Brexit, EU Nationals arriving in the UK must now have the appropriate visas if they want to live and work here.

For more than a year, border officials have detained some EU Nationals at UK ports and airports, if they suspect them of planning to work here illegally.

But those EU citizens already in the UK and working without permission, have not been pursued by immigration enforcement, until now.

‘This is a call to action’, RCEM & College of Paramedics say as Lords Public Services Committee detail scale of crisis in Emergency Care

Responding to the House of Lords Public Services Committee’s report [Emergency Healthcare: a national emergency](#) published today, Dr Adrian Boyle, President of the Royal College of Emergency Medicine, said:

“We thank the Lords Public Services Committee for their time and for the publication of this important report. We welcome the gravity, openness, and honesty with which they have acknowledged and laid out the reality of the crisis in Emergency Care and its severe impact on both patients and staff.

“The report is exactly right: lack of hospital capacity; lack of adequate or sufficient social care; fundamentally dishonest 12-hour waiting time data; inability to admit patients; inability to discharge patients; these have all contributed to a crisis on a scale not seen before. A crisis which has led to a gridlock across health services, and in turn has led to dangerous crowding and extremely long waiting times that we know are associated with patient harm and patient deaths. Emergency Medicine staff and paramedic colleagues have been stretched to their limit trying to mitigate the harm to patients and continue delivering effective care, but it is extremely challenging in the current circumstances. Staff can no longer burn themselves out on adrenaline and goodwill alone.

“We welcomed the £250 million that the government pledged to social care and to tackle ambulance handover delays. We are yet to see the detail on when this funding will be made available for local systems and when the extra care home capacity will be opened. NHS England have pledged to open 7,000 beds in hospitals including virtual wards, again, we are yet to see the detail on how many of these beds have since been opened, how many are virtual, and where we can track these data.

“While both of these steps are welcome and rightly aim to tackle the immediate impact of the crisis, there remains an unwillingness to take the necessary, meaningful long-term, cross-party action to tackle the root. This crisis was foreseeable and has been culminating since long-before the pandemic. A decade of under-funding, under-resourcing, cuts to social care all matched with a failure for long-term workforce planning and a significant shortfall in beds have led us to a broken health and social care system.

“It is time for the government to face this dire crisis, to finally acknowledge its depth, and to take the necessary meaningful action to tackle it. We urgently need to see long-term workforce planning; this must begin with retention - this means valuing and supporting existing staff who have faced years of exceptionally challenging conditions. We must see significant, continued, and sustained investment in social care – including an immediate bolstering of the social care workforce, to ensure patients can be supported and discharged in a timely way. We must see acute capacity across England expanded where safely possible. Lastly, the Committee are absolutely right, NHS England must now publicly publish monthly 12-hour A&E waiting time data measured from the time of arrival at the Emergency Department, as a matter of transparency and honesty.”

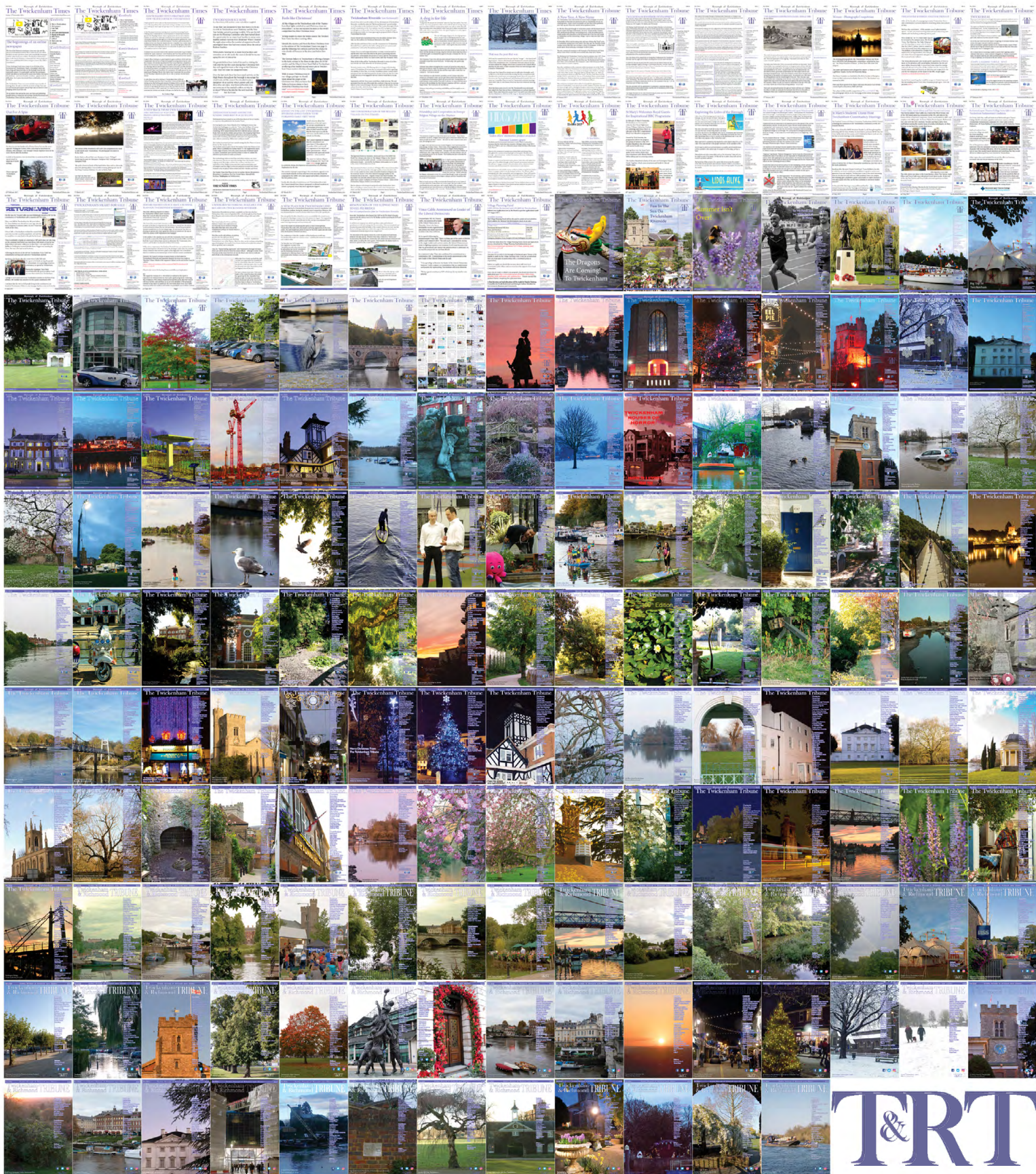
Tracy Nicholls, Chief Executive of the College of Paramedics, said:

“The insightful Lords Public Services Committee report today lays bare the stark reality of the inability of paramedics, ambulance clinicians and our emergency colleagues to provide the care they want, and that patients deserve. What now needs to follow is meaningful action, not further rhetoric. Patients suffered harm yesterday, and today, and will suffer harm tomorrow, so time is imperative. Moral injury of paramedics and ambulance clinicians is a reality, so the College supports RCEM’s call for meaningful actions, including longer-term workforce planning.”



Royal College of
Emergency Medicine

324 editions of the **Twickenham & Richmond Tribune** online - Lots to read: News, Reviews, History, Sports and On-going Sagas in the Borough of Richmond upon Thames



Half Page

Quarter Page
Landscape

Quarter Page Portrait

Eighth Page

Eighth Page
Landscape

Example advert sizes shown above

Thousands read The Twickenham & Richmond Tribune

If you are reading this you could be advertising your business with
The Twickenham & Richmond Tribune. Community rates are
available

Contact: advertise@TwickenhamTribune.com

View ad details at www.TwickenhamTribune.com/advertise

Contact

contact@TwickenhamTribune.com
letters@TwickenhamTribune.com
advertise@TwickenhamTribune.com



Published by:

Twickenham & Richmond Tribune (in association with World InfoZone Limited)

Registered in England & Wales

Reg No 10549345

The Twickenham Tribune is registered with the ICO under the Data Protection Act, Reg No ZA224725

©Twickenham & Richmond Tribune. All rights reserved. No part of this publication may be used or reproduced without the permission of Twickenham & Richmond Tribune. While we take reasonable efforts, this online newspaper cannot be held responsible for the accuracy or reliability of information. The views and opinions in these pages do not necessarily represent those of The Twickenham & Richmond Tribune.

[Terms & Conditions](#)